

(19)



(11)

EP 1 319 753 B1

(12)

EUROPEAN PATENT SPECIFICATION

(45) Date of publication and mention of the grant of the patent:
28.11.2007 Bulletin 2007/48

(51) Int Cl.:
E01C 13/08^(2006.01)

(21) Application number: **02023942.2**

(22) Date of filing: **25.10.2002**

(54) **A process for removing synthetic-grass floorings, corresponding use and product**

Verfahren zur Entfernung von Kunstrasenböden, entsprechende Verwendung und Produkt

Procédé pour éliminer des surfaces en gazon synthétique, utilisation correspondante et produit

(84) Designated Contracting States:
**AT BE BG CH CY CZ DE DK EE ES FI FR GB GR
 IE IT LI LU MC NL PT SE SK TR**

(30) Priority: **11.12.2001 IT TO20011154**

(43) Date of publication of application:
18.06.2003 Bulletin 2003/25

(73) Proprietor: **Mondo S.p.A.**
12051 Alba Frazione Gallo CN (IT)

(72) Inventor: **Stroppiana, Fernando**
12060 Grinzane Cavour (Cuneo) (IT)

(74) Representative: **Bosotti, Luciano et al**
c/o Buzzi, Notaro & Antonielli d'Oulx Srl,
Via Maria Vittoria, 18
10123 Torino (IT)

(56) References cited:
EP-A- 0 185 646 US-A- 4 337 283
US-A- 5 494 628

EP 1 319 753 B1

Note: Within nine months from the publication of the mention of the grant of the European patent, any person may give notice to the European Patent Office of opposition to the European patent granted. Notice of opposition shall be filed in a written reasoned statement. It shall not be deemed to have been filed until the opposition fee has been paid. (Art. 99(1) European Patent Convention).

Description

[0001] The present invention relates to synthetic-grass structures and regards more specifically the removal of synthetic-grass structures having the characteristics referred to in the preamble of Claim 1.

[0002] A synthetic-grass structure of the above type is known, for example, from EP-A-1 158 099.

[0003] Basically, a synthetic-grass structure of the type referred to above comprises, in normal laying conditions, a sheet substrate with a plurality of filiform formations that extend upwards starting from the substrate itself so as to simulate natural-grass cover or natural turf. A particulate filling material or infill is dispersed between the filiform formations so as to maintain them in a substantially erect condition.

[0004] The solution described in the document cited above specifically envisages that the aforesaid filling material or infill should consist of a substantially homogeneous mass of a granular material chosen in the group made up of polyolefin-based materials and vinyl-polymer-based materials.

[0005] In other solutions, such as the one described in US-A-5 958 527, instead, the infill comprises a plurality of layers of granular material, such as sand, fragmented rubber material, obtained for example as material recycled from used tyres, and/or mixtures of the two.

[0006] The synthetic-grass structures are increasingly considered as being a valid alternative to natural-grass cover. This, in particular, regards applications (sports facilities, etc.) in which, for different reasons (environmental conditions, intense use, etc.), upkeep of natural turf proves to be a critical problem, also on account of the maintenance costs involved.

[0007] Prolonged exposure to environmental agents (light, atmospheric agents of various nature, etc.) renders it, however, necessary to replace the synthetic-grass cover at intervals in the region of, for example, 4-12 years.

[0008] The operation of replacement involves pulling up the synthetic-grass flooring that was previously laid and the consequent gathering-up and disposal of the corresponding components.

[0009] This applies chiefly as regards the sheet substrate and the filiform formations which simulate natural grass. In many cases, the same considerations apply, however, also to the filling materials, above all in the case where the infill was initially distributed in a number of superimposed layers of different materials, which are inevitably bound to mix together during use and even more during the operation of removal of the flooring.

[0010] The purpose of the present invention is to enable the removal of synthetic-grass floorings to be carried out in conditions that make possible a high degree of reuse of the materials that make up the synthetic-grass flooring that is pulled up in order to be able to lay a new synthetic-grass flooring. The possibility of salvaging and re-using the material is significant both in economic terms and in environmental terms if it is taken into account that

synthetic-grass floorings are currently widely used for sports facilities, such as soccer fields, rugby fields or American-football fields, in which the surface of the synthetic-grass floorings may measure even several thousand square metres in area.

[0011] In accordance with the present invention, the above purpose is achieved thanks to a process having the characteristics recalled specifically in the ensuing claims. The invention also regards the corresponding use and the corresponding product of the salvaging operation.

[0012] Essentially, the solution according to the invention is based upon the recognition of the fact - an altogether unexpected and surprising one - that the particulate material obtained from shredding of the sheet substrate and filiform formations of a synthetic-grass flooring that needs to be pulled up can be used to advantage - either completely or in part - as particulate infill made of plastic material according to the criteria set down in EP-A-1 158 099 already cited previously. This is true even if the synthetic-grass flooring that is pulled up has been exposed to environmental and atmospheric agents for a prolonged period of time, i.e., in the region of the time intervals involved in the change of synthetic-grass floorings referred to previously.

[0013] The present invention will now be described, purely by way of non-limiting example, with reference to the attached drawings, in which:

- Figure 1 reproduces schematically an idealized vertical section of a synthetic-grass structure according to the invention; and
- Figure 2 illustrates, in the form of a flowchart, the various operating steps involved in the currently preferred embodiment of the process according to the invention.

[0014] The structure of the synthetic-grass flooring illustrated in Figure 1 comprises a sheet substrate 1 designed to be laid on a subfloor G, which, in the most typical condition of use, consists of a subfloor made of tamped earth or of a bituminous mat, over which the synthetic-grass cover is laid usually in free-laying conditions.

[0015] The sheet substrate 1 may be made up of a sheet of plastic material, such as a non-woven fabric (possibly consisting of a number of layers) that has a base of polyolefins, such as polypropylene, with associated thereto, so as to provide a suitable matrix of retention and stabilization, a mass of plastic material, such as SBR rubber latex.

[0016] Starting from the substrate 1, a plurality of filiform formations 2 extend upwards, the said filiform formations being usually arranged in tufts so as to resemble more closely the blades of grass of natural-grass cover.

[0017] The filiform formations 2 are anchored to the substrate 1 at their proximal ends, designated by 2a, and extend upwards with their distal ends for a total length - measured starting from the general plane of extension

of the substrate 1 - which may typically be in the 30-mm to 60-mm range, according to the applications envisaged.

[0018] The general criteria for making the substrate 1 and the filiform formations 2 (including the modalities for obtaining firm anchorage of the proximal ends 2a of the filiform formations 2 to the substrate 1) are known to the art, and hence do not require a detailed description herein, also because they are of themselves not important for the purposes of understanding the present invention.

[0019] For instance, it is known that the filiform formations 2 are generally made of a plastic material, such as a polyolefin (polyethylene, polypropylene, and/or the corresponding copolymers).

[0020] Likewise known is the fact that on the surface of the substrate 1 facing the subfloor G there may be present a layer of foamed material, such as rubber latex (not shown in the drawing).

[0021] Also known is the fact that usually, during laying of the synthetic-grass flooring, above the substrate 1 and hence between the filiform formations 2, there is dispersed a particulate filling material (infill). The function of this material is to keep the filiform formations 2 in the upright condition, i.e., preventing them from lying down flat on the substrate 1 in an undesirable way.

[0022] The particulate filling material 3 is dispersed between the filiform formations 2 in a sufficient amount to cause the distal portions of the filiform formations 2 to be supported by the infill 3 for a length of between, for example, 20 and 30 mm. This means that the distal ends of the filiform formations 2 project from the top surface of the layer of infill 3 for a length in the region of 10-20 mm.

[0023] In the synthetic-grass flooring structure described in US-A-5 958 527, the aforesaid infill comprises:

- a bottom or foundation layer, consisting practically exclusively of granular material 2 such as, typically, sand;
- a top layer consisting practically exclusively of granules of compliant material consisting, for example, of fragmented rubber material, preferably obtained as recycled material from used tyres; and
- an intermediate layer comprising a mixture of the two particulate materials referred to above in selectively pre-determined weight ratios.

[0024] In the solution described in EP-A-1 158 099, the particulate material 3 is, instead, a homogeneous material dispersed on top of the substrate 1 between the filiform formations 2 in a substantially uniform way, without giving rise to superimposed layers having differentiated characteristics. Preferably, the aforesaid particulate material is a granular material having a grain size typically of between 0.5 and 4.5 mm and a density typically of between 1.5 and 1.6 g/cm³.

[0025] The said material may consist of a polyolefin material, such as polyethylene, and, even more preferably, of a recycled olefin material, such as recycled polyethylene.

[0026] Alternatively, the material consists of a vinyl polymer such as PVC, and, even more preferably, of a recycled vinyl polymer, such as recycled PVC. The said infill is, also on account of its altogether uniform structure, completely re-usable and recyclable in the case of removal of the synthetic-grass flooring.

[0027] The same, instead, does not apply, other than to a partial extent and at the expense of somewhat burdensome operations of treatment, in the case where the infill is made up to a greater or lesser extent of sand.

[0028] Basically, the solution according to the invention extends the possibility of recycling/salvage of the material (or rather to the complex of materials) that make up the sheet substrate and the filiform formations of the synthetic-grass flooring, with the added possibility of obtaining from said material - given its nature of plastic material - particulate material that can be used as infill for a synthetic-grass flooring structure that is to be newly laid.

[0029] It will therefore be appreciated that the solution according to the invention can also be applied to synthetic-grass structures originally comprising a particulate infill other than a plastic material, for instance, sand.

[0030] In the case of a synthetic-grass flooring structure that already comprises a particulate infill consisting of plastic material such as polyolefin-based material and/or vinyl-polymer-based material, the solution according to the invention offers a practically complete possibility of recovery and recycling of said material.

[0031] In the flowchart of Figure 2, starting from an initial start-up step, designated by 100, the reference number 102 designates the operation of removal of the synthetic-grass flooring structure that is to be pulled up from the laid condition.

[0032] The said operation is carried out preferably with the aid of mechanical means such as, for example, motor-driven machines for gathering and cutting into strips the synthetic-grass flooring that is pulled up, with a view to the possible collection of the material in the form, for instance, of ribbons or reels.

[0033] The reference number 104 designates a step in which the sheet substrate 1 and the filiform formations 2 are separated from the infill 3. This operation can be carried out, for example, by subjecting said synthetic-grass flooring removed from the laid condition to an operation of shaking (for instance using a vibrator device). The shaking operation may involve turning the synthetic-grass structure upside down so as to cause the filiform formations simulating natural-grass cover to face downwards to facilitate dropping of the particulate infill made of plastic material.

[0034] The operation represented by block 104 is practically compulsory in the case where the synthetic-grass flooring that is pulled up is provided with a sand-based particulate material. It is, instead, optional in the case where the synthetic-grass flooring that is pulled up comprises a particulate filling material which is itself made of plastic material.

[0035] Also in this latter case, the operation of sorting

(step 104) represents in any case a preferential choice given that the polyolefin-based and/or vinyl-polymer-based particulate material in question may be directly sent on for recycling (in the terms described in greater detail in what follows) after possibly undergoing a reconditioning operation, represented schematically by block 106 and aimed, for instance, at purifying the aforesaid particulate filling material from dust and/or dirt of various nature that has collected during the previous period of use.

[0036] Returning to the main line of the flowchart of Figure 2, the step designated by 108 envisages that the plastic material forming the sheet substrate 1 and the filiform formations 2 (as well as possibly the particulate material of a similar nature that may have remained in the case where the separation step 104 has not been carried out) will be chopped up, for example undergoing an operation of shredding. This operation is performed, preferably by means of a cold process (i.e., without any supply of thermal energy from outside), using mechanical shredding apparatus currently available, of the type used, for example, for breaking up recycled material obtained from used tyres.

[0037] The reference number 110 designates an (optional) operation of sifting, to which the material resulting from the shredding process 108 is subjected so as to ensure that the said material will have a selectively predetermined grain size, for instance between 0.5 and 4.5 mm.

[0038] The reference number 112 designates an operation of mixing, in which the material resulting from the shredding process 108 and sifting process 110 (if carried out) is mixed with the particulate material previously separated in step 104 (if it has been required to undergo reconditioning in step 106) and/or with similar "fresh" material.

[0039] Of course, in the case where the operation of sorting or separation represented by block 104 has not been carried out previously, it is possible to do without the mixing operation represented by step 112.

[0040] Block 114 (which precedes a final block 116) represents the operation of re-use proper of the particulate material obtained in the previous steps.

[0041] The above operation of re-use basically corresponds to the new use of the particulate material in question as particulate infill in a synthetic-grass flooring structure that is to be newly laid according to the criteria set down in EP-A-1 158 099.

[0042] The said operation, which envisages dispersing at least part of the salvaged particulate material 3 in a synthetic-grass flooring structure to be newly laid, can be carried out directly *in situ*, i.e., where removal of a pre-existing synthetic-grass flooring structure that is carried out (after prior location *in situ* of a new sheet substrate that is to constitute the sheet substrate of the synthetic-grass flooring that is to be newly laid) at a distance - whether in space or in time - with respect to the operation of removal of the pre-existing synthetic-grass flooring.

[0043] In the latter case, the salvaged particulate material obtained by shredding in the step designated by 108 (possibly subjected to sifting in step 110 and mixing of other granular material in step 112) constitutes an intermediate product of recycling that can be used independently.

[0044] Of course, without prejudice to the principle of the invention, the details of construction and the embodiments may vary widely with respect to what is described and illustrated herein, without thereby departing from the scope of the present invention.

Claims

1. A process for removing synthetic-grass floorings of the type comprising:

- a sheet substrate (1) with a plurality of filiform formations (2) that extend from the substrate (1) to simulate natural-grass cover or sward, said substrate (1) and said filiform formations (2) consisting of plastic material; and
- a particulate filling material or infill (3) dispersed between said filiform formations (2) so as to maintain said filiform formations (2) in a substantially erect condition;

characterized in that it comprises the operations of:

- removing (102) the synthetic-grass flooring from the laid condition; and
- subjecting said sheet substrate (1) and said filiform formations (2) to shredding (108) so as to produce a salvaged particulate material, said salvaged particulate material being usable as component of said particulate filling material or infill (3) in a synthetic-grass flooring to be newly laid.

2. The process according to Claim 1, **characterized in that** it further comprises the operation of dispersing at least part of said salvaged particulate material as particulate infill (3) in said newly laid synthetic-grass flooring.

3. The process according to Claim 1 or Claim 2, **characterized in that** said synthetic-grass flooring removed from the laid condition is subjected to an operation of sorting (104) aimed at separating said sheet substrate (1) and said filiform formations (2) from said particulate infill (3).

4. The process according to Claim 3 applied to the removal of a synthetic-grass flooring, in which said infill (3) consists of a substantially homogeneous mass of a granular plastic material, the said process being **characterized in that** it comprises the operation of

mixing (112) said salvaged particulate material with said infill (3) separated from said sheet substrate (1) and said fillform formations (2) of the synthetic-grass flooring undergoing removal.

5. The process according to Claim 4, **characterized in that** said infill (3) separated from said sheet substrate (1) and said fillform formations (2) is subjected to an operation of reconditioning (106) before being mixed (110) with said salvaged particulate material. 5 10
6. The process according to Claim 1 or Claim 2 applied to the removal of a synthetic-grass flooring, in which said infill (3) consists of a substantially homogeneous mass of a granular plastic material, the said process being **characterized in that** it comprises the operation of subjecting to shredding (104) both said sheet substrate (1) and said fillform formations (2), as well as said particulate infill (3). 15 20
7. The process according to any one of the preceding claims, **characterized in that** said salvaged particulate material subjected to shredding has a grain size of between 0.5 and 4.5 mm. 25
8. The process according to any one of the preceding claims, **characterized in that** said salvaged particulate material is obtained by means of an operation of shredding (108) carried out without supply of heat from outside. 30
9. The process according to any one of the preceding claims, **characterized in that**, after shredding, said salvaged particulate material undergoes sifting. 35
10. Use of the process according to any one of the preceding claims for removing synthetic-grass floorings, in which said sheet substrate (1) comprises at least one layer of polyolefin-based non-woven fabric, with possibly associated thereto a latex matrix and/or a foundation layer made of foamed material. 40
11. Use of the process according to any one of Claims 1 to 9 for removing synthetic-grass floorings, in which said fillform formations (2) consist of a polyolefin material. 45
12. A salvaged particulate material as product of the process according to any one of Claims 1 to 9. 50

Patentansprüche

1. Verfahren, um synthetische Grasbodenbeläge zu entfernen, und zwar von dem Typ, der Folgendes umfasst: 55
 - einen Folienbahnträger (1) mit einer Mehrzahl

von dünnen Formationen (2), die sich vom Träger (1) aus erstrecken, um natürliche Grasbedeckung oder Rasen zu simulieren, wobei der Träger (1) und die dünnen Formationen (2) aus Plastikmaterial bestehen; und

- ein partikelartiges Füllmaterial oder Füllung (3), die eingebracht ist zwischen den dünnen Formationen (2), um so die dünnen Formationen (2) in einem im Wesentlichen aufrechten Zustand zu halten;

dadurch gekennzeichnet, dass es folgenden Ablauf umfasst:

- Entfernen (102) des synthetischen Grasbodenbelags von dem ausgebreiteten Zustand; und
- Unterwerfen des Folienbahnträgers (1) und der dünnen Formationen (2) einem Schreddern (182), um ein partikelartiges Abfallmaterial zu erhalten, wobei das partikelartige Abfallmaterial verwendbar ist als die Komponente des partikelartigen Füllmaterials oder Füllung (3) in einem synthetischen Grasbodenbelag, der neu ausgelegt wird.

2. Verfahren nach Anspruch 1, **dadurch gekennzeichnet, dass** es weiter umfasst den Ablauf des Dispergierens von wenigstens einem Teil des partikelartigen Abfallmaterials als partikelartige Füllung (3) in dem neu ausgelegten synthetischen Grasbodenbelag.
3. Verfahren nach Anspruch 1 oder Anspruch 2, **dadurch gekennzeichnet, dass** der synthetische Grasbodenbelag, der von seinem ausgelegten Zustand entfernt wurde, einem Ablauf des Sortierens (104) unterworfen wird, dahingehend, um den Folienbahnträger (1) und die dünnen Formationen (2) von der partikelartigen Füllung (3) zu separieren.
4. Verfahren nach Anspruch 3, angewandt zum Entfernen eines synthetischen Grasbodenbelags, in welchem das Füllmaterial (3) aus einer substanziiell homogenen Masse von granuliertem Plastikmaterial besteht, wobei das Verfahren **dadurch gekennzeichnet ist, dass** es den Ablauf des Vermischens (112) des partikelartigen Abfallmaterials mit der Füllung (3), die abgeteilt wurde von dem Folienbahnträger (1) und den dünnen Formationen (2) des synthetischen Grasbodenbelages, der einer Wiederverwendung unterzogen wird, umfasst.
5. Verfahren nach Anspruch 4, **dadurch gekennzeichnet, dass** das Füllmaterial (3), abgeteilt von dem Träger (1) und den dünnen Formationen (2), einer Operation des Rekonditionierens (106) unterworfen wird, bevor es mit dem partikelartigen Abfall-

material gemischt wird (110).

6. Verfahren nach Anspruch 1 oder Anspruch 2, angewandt für das Entfernen eines synthetischen Grasbodenbelags, in welchem die Füllung (3) aus einer substantiell homogenen Masse von granuliertem Plastikmaterial besteht, wobei das Verfahren **dadurch gekennzeichnet ist, dass** es die Operation des Unterwerfens dem Schreddern (104) von beidem, nämlich dem Folienbahnträger (1) und den dünnen Formationen (2), als auch dem partikelartigen Füllmaterial (3) umfasst. 5
7. Verfahren nach irgendeinem der vorhergehenden Ansprüche, **dadurch gekennzeichnet, dass** das partikelartige Abfallmaterial, das einem Schreddern unterzogen wird, eine Korngröße zwischen 0,5 und 4,5 mm hat. 15
8. Verfahren nach irgendeinem der vorhergehenden Ansprüche, **dadurch gekennzeichnet, dass** das partikelartige Abfallmaterial durch eine Operation des Schredderns (108) erhalten wird, ausgeführt ohne Zuführung von Hitze von außerhalb. 20
9. Verfahren nach irgendeinem der vorhergehenden Ansprüche, **dadurch gekennzeichnet, dass** das partikelartige Abfallmaterial nach dem Schreddern einem Sieben unterzogen wird. 25
10. Verwendung des Verfahrens nach irgendeinem der vorhergehenden Ansprüche, um synthetische Grasbodenbeläge zu entfernen, in welchem der Folienbahnträger (1) wenigstens eine Schicht aus Polyolefin-basiertem nichtgewebtem bzw. Vliesstoff umfasst, der möglichst assoziiert wird zu einer Latexmatrix und/oder zu einer Grundschicht, die aus aufgeschäumtem Material gemacht ist. 30
11. Verwendung des Verfahrens nach irgendeinem der Ansprüche 1 bis 9, um synthetische Grasbodenbeläge zu entfernen, in welchen die dünnen Formationen (2) aus Polyolefinmaterial bestehen. 35
12. Partikelartiges Abfallmaterial als Erzeugnis des Verfahrens nach irgendeinem der Ansprüche 1 bis 9. 40

Revendications 45

1. Procédé pour le retrait de revêtements de sol de type herbe synthétique du type comprenant : 50
 - un substrat sous forme de feuille (1) avec une pluralité de formations filiformes (2) qui s'étendent depuis le substrat (1) pour simuler une couverture d'herbe naturelle ou un gazon, ledit substrat (1) et lesdites formations filiformes (2) 55

étant constituées de matériau plastique ; et
 - un matériau de remplissage particulaire ou élément de remplissage (3) dispersé entre lesdites formations filiformes (2) de manière à maintenir lesdites formations filiformes (2) dans un état sensiblement dressé ;

Caractérisé en ce qu'il comprend les opérations consistant à :

- retirer (102) le revêtement de sol de type herbe synthétique de l'état étendu ; et
 - soumettre ledit substrat sous forme de feuille (1) et lesdites formations filiformes (2) à un déchiquetage (108) de manière à produire un matériau particulaire de récupération, ledit matériau particulaire de récupération étant utilisable en tant que composant dudit matériau de remplissage particulaire ou élément de remplissage (3) dans un revêtement de sol de type herbe synthétique qui doit être nouvellement étendu.
2. Procédé selon la revendication 1, **caractérisé en ce qu'il** comprend en outre l'opération consistant à disperser au moins une partie dudit matériau particulaire de récupération en tant qu'élément de remplissage particulaire (3) dans ledit revêtement de sol de type herbe synthétique nouvellement étendu.
 3. Procédé selon la revendication 1 ou la revendication 2, **caractérisé en ce que** ledit revêtement de sol de type herbe synthétique retiré de l'état étendu est soumis à une opération de tri (104) visant à séparer ledit substrat sous forme de feuille (1) et lesdites formations filiformes (2) dudit élément de remplissage particulaire (3).
 4. Procédé selon la revendication 3 appliqué au retrait d'un revêtement de sol de type herbe synthétique, dans lequel ledit élément de remplissage (3) est constitué d'une masse sensiblement homogène d'un matériau plastique granulaire, ledit procédé étant **caractérisé en ce qu'il** comprend l'opération consistant à mélanger (112) ledit matériau particulaire de récupération avec ledit élément de remplissage (3) séparé dudit substrat sous forme de feuille (1) et desdites formations filiformes (2) du revêtement de sol de type herbe synthétique subissant le retrait.
 5. Procédé selon la revendication 4, **caractérisé en ce que** ledit élément de remplissage (3) séparé dudit substrat sous forme de feuille (1) et desdites formations filiformes (2) est soumis à une opération de remise en état (106) avant d'être mélangé (110) avec ledit matériau particulaire de récupération.
 6. Procédé selon la revendication 1 ou la revendication

- 2 appliqué au retrait d'un revêtement de sol de type
herbe synthétique, dans lequel ledit élément de rem-
plissage (3) est constitué d'une masse sensiblement
homogène d'un matériau plastique granulaire, ledit
procédé étant **caractérisé en ce qu'il** comprend 5
l'opération consistant à soumettre à un déchiqeta-
ge (104) à la fois ledit substrat sous forme de feuille
(1) et lesdites formations filiformes (2), ainsi que ledit
élément de remplissage particulière (3). 10
7. Procédé selon l'une quelconque des revendications
précédentes, **caractérisé en ce que** ledit matériau
particulaire de récupération soumis à un déchiqeta-
ge a une taille de grain comprise entre 0,5 et 4,5
mm. 15
8. Procédé selon l'une quelconque des revendications
précédentes, **caractérisé en ce que** ledit matériau
particulaire de récupération est obtenu au moyen
d'une opération de déchiqetage (108) réalisée sans 20
apport de chaleur depuis l'extérieur.
9. Procédé selon l'une quelconque des revendications
précédentes, **caractérisé en ce que**, après déchi-
quetage, ledit matériau particulaire de récupération 25
subit un tamisage.
10. Utilisation du procédé selon l'une quelconque des
revendications précédentes pour le retrait de revê- 30
tements de sol de type herbe synthétique, dans le-
quel ledit substrat sous forme de feuille (1) comprend
au moins une couche d'un tissu non tissé à base de
polyoléfine, avec une matrice de latex éventuelle-
ment associée à celui-ci, et/ou une couche de base
constituée d'un matériau expansé. 35
11. Utilisation du procédé selon l'une quelconque des
revendications 1 à 9 pour retirer des revêtements de
sol de type herbe synthétique, dans laquelle lesdites 40
formations filiformes (2) sont constituées d'un maté-
riau de polyoléfine.
12. Matériau particulaire de récupération en tant que
produit du procédé selon l'une quelconque des re-
vendications 1 à 9. 45

50

55

Fig. 1

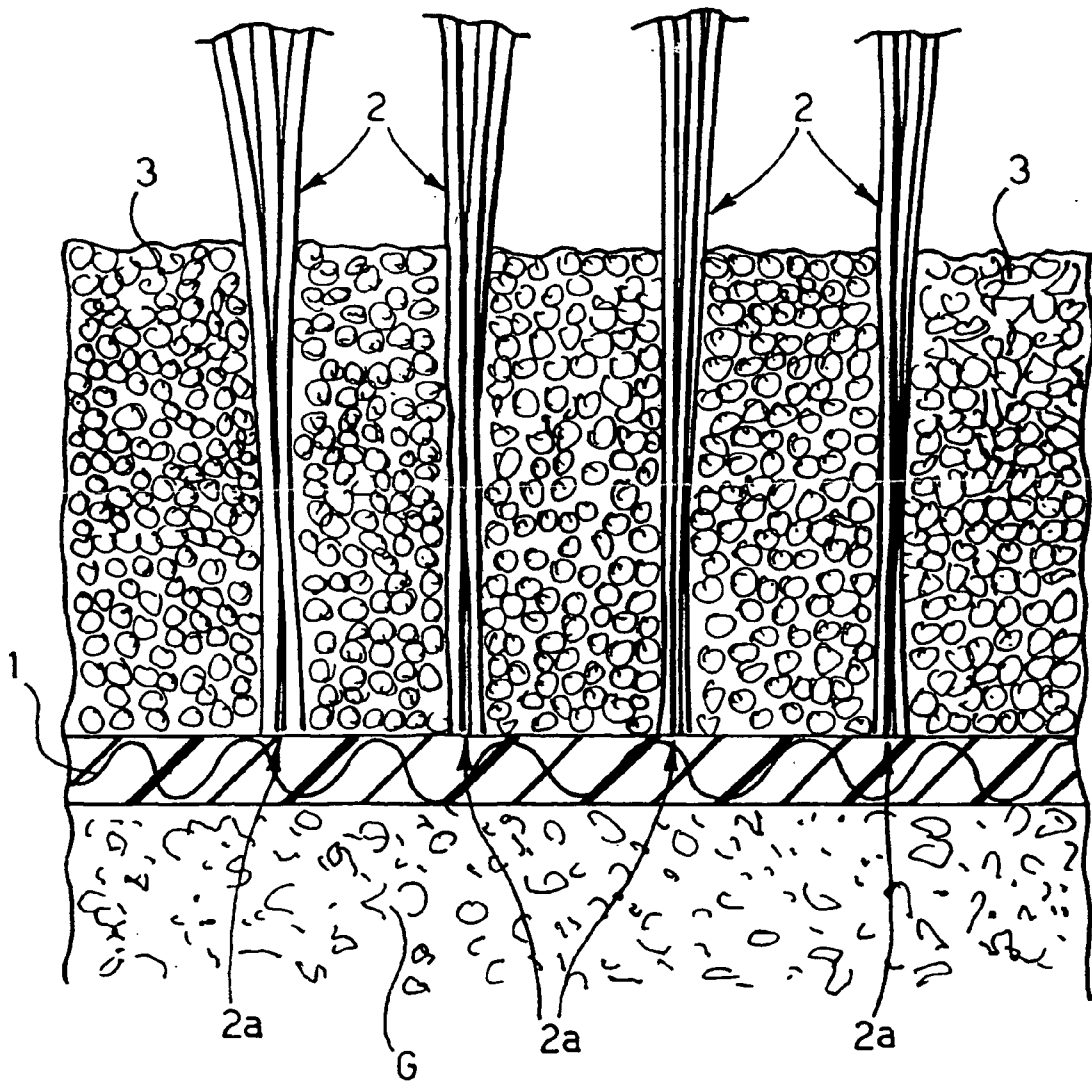
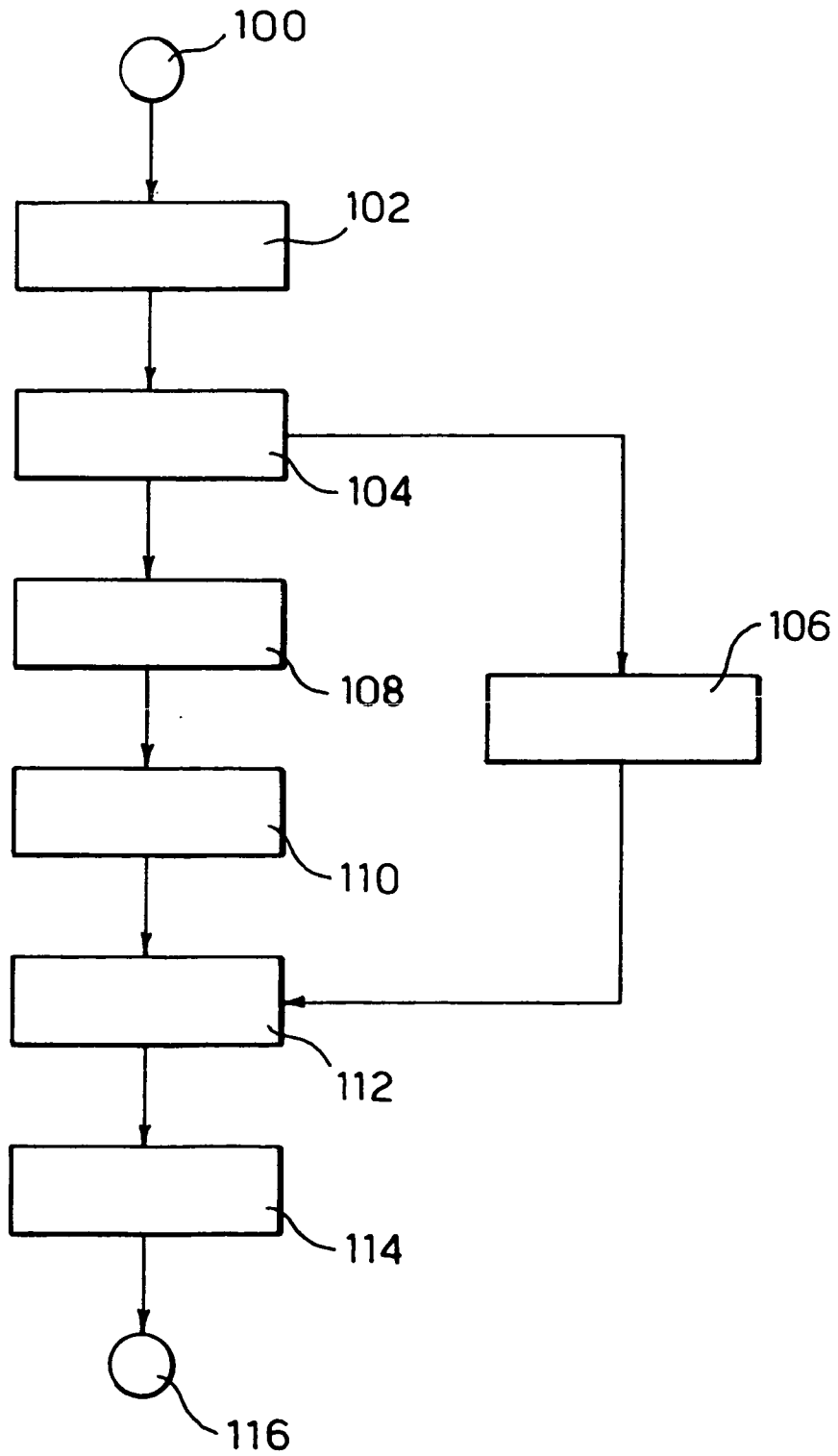


Fig. 2



REFERENCES CITED IN THE DESCRIPTION

This list of references cited by the applicant is for the reader's convenience only. It does not form part of the European patent document. Even though great care has been taken in compiling the references, errors or omissions cannot be excluded and the EPO disclaims all liability in this regard.

Patent documents cited in the description

- EP 1158099 A [0002] [0012] [0024] [0041]
- US 5958527 A [0005] [0023]